



650/800WPE

Electric Walkie Low Lift • 6,500 & 8,000 lbs. Capacities • 24 Volt

Hydraulic System

Lift ram is hard chrome plated. Pump unit including motor, gear pump, and solenoid-actuated, pressure-compensated lowering valve is mounted high in power compartment for accessibility. 4.5" diameter motor, 2.9 H.P., 2.2 Kw

Electrical System

State-of-the-art transistor controller requires no contactors to control separately excited drive motor. Infinitely variable speed control with class "H" insulated motor. Emergency power cut-off switch. Line contactor to protect against reverse polarity.

Drive motor controller is fully programmable with service tool handset. Power On Self Test and run-time diagnostics provide exceptional reliability. Complete diagnostics can be performed with service tool handset.

Controls

Travel speeds, lift/lower controls, horn, and reversing switch are located in ergonomically correct handle and operable with either hand. Mid-mounted control handle keeps operator at proper distance from undercarriage when walking and provides for ease of steering. Reversing switch, key switch, and horn button are standard. Thumb control is standard.

Brake System

Drum brake is mounted on motor armature shaft greatly multiplying braking power through the double reduction transmission. Brake is applied when control handle is within 12 1/2° of vertical or 10 1/2° from horizontal position.

Traction Motor

Motor direct mounted to gear housing. Double reduction 22:1 helical and spur gear drive train transfers power most efficiently from drive motor to axle. Simple basic design provides long life and minimum maintenance. The entire closed power train operates in oil bath. 6.75" motor diameter, 1.85 H.P., 1.75 Kw

Bearings

Drive Wheel - Tapered roller bearings running in oil in sealed case.

Load Wheels - Greaseable sealed ball bearings.

Transmission Support - Vertical thrust and horizontal loads carried by two extra heavy-duty tapered roller bearings.



Fork Linkage - Self-lubricating heat-treated steel bushings. Lubrication fittings on all pivot points are standard.

Accessibility

Drive tire can be removed with one nut. For quick access to major components release door latch and swing open door.

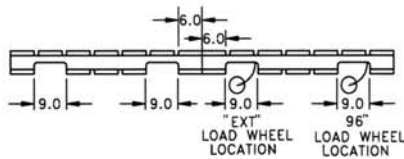
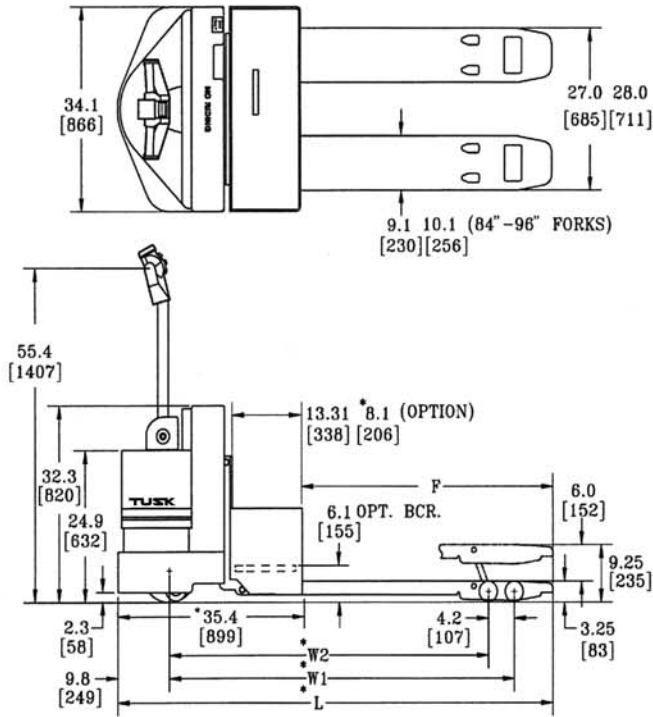
Standard Equipment

- Infinite variable transistor, speed controller
- Thumb control
- Key switch, horn
- Reversing switch
- Emergency power disconnect
- Battery discharge indicator and Hour meter combination
- Automatic resetting circuit breakers
- Raise and lower switches in handle
- Hydraulic overload protection valve

- Forks - 27" overall width x 48" length with 6" lift
- SB-175 red battery connector
- 3.25" x 6.0" Polyurethane load wheels
- 10.5" x 5.0" Rubber drive tire
- Lubrication package for pivot points

Optional Equipment

- Various tire compounds
- Optional fork lengths and widths
- Battery discharge indicator with lift interrupt and hour meter
- Load backrest, 48", 60" or 72" high
- Cold storage conditioning
- Battery compartment rollers with right- or left-hand exit gate
- Chassis casters
- Fork entry rollers
- Twist grip
- Toggle switch
- Safety yellow or orange paint

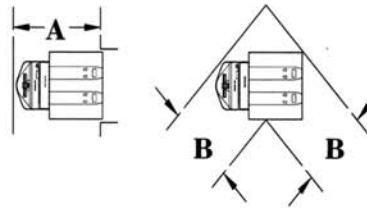


RECOMMENDED BATTERIES*

Model	650/800WPE
Voltage	24
Cells	12
Plates	7 - 13
Capacity	
AH	510/660
KWH	11.9/15.2
Size	
in.	30.88 x 13.0 x 23.25
mm.	784 x 330 x 691
Approximate Weight	
lbs.	900 - 1300
kg.	408 - 590

*Batteries in steel tray with cover. Minimum weight 800 lbs. Lead length 12", position B. Conn. SB-175 Red

Pallet Length	Grade Clearance
36	42%
42	37%
48	33%
96	18%
84 Ext.	24%
93 ext.	24%



SPECIFICATIONS

		Aisle Turning Dimensions										
		Pallet Length										
		Standard Forks				Ext. Nose Forks						
Pallet	Width	36	42	48	96	84	93	84	93	84	93	
36	70	55	76	59	82	62	129	87	131	75	131	75
40	70	58	76	62	82	64	129	89	131	77	131	77
42	70	59	76	62	82	65	129	94	131	79	131	79
48	70	62	78	72	83	75	128	94	131	82	131	82
60	73	69	78	72	83	75	128	100	130	88	130	88

Minimum Aisle Width - 13.3" Compartment, 1" Clearance Each Side of Load. Add 6" - 8" for ease of operation.

A - Right Angle Stack

B - Intersecting Aisle

OPERATING DATA

Model	650WPE		800WPE	
	Capacity (lbs./kg.)	6500/2947	8000/3629	
Travel Speeds	mph.	km/hr.	mph.	km/hr.
	Empty	3.7	5.9	3.7
Loaded	2.6	4.1	2.4	3.8
Gradeability (Loaded)	10%		6%	
Weight	lbs.		kg.	
Less battery	1350		612	

UNIT DIMENSIONS

Model	650/800WPE Single Pallet						650/800WPE Double Pallet					
	in.		mm.		in.		mm.		in.		mm.	
F Fork length	36.0	914	42.0	1067	48.0	1219	96.0	2438	84.0	2134	93.0	2362
*W1 Wheelbase lowered	53.8	1367	59.8	1519	65.8	1671	113.8	2891	81.0	2057	87.0	2210
*W2 Wheelbase raised	49.6	1260	55.6	1412	61.6	1565	109.6	2784	76.8	1951	82.8	2103
*L Overall length	71.4	1814	77.4	1966	83.4	2118	131.4	3338	119.4	3033	128.4	3261
Tires	in.						mm.					
Drive - rubber	10.50 x 5.0						268 x 127					
Load - polyurethane	3.25 x 6.0						83 x 152					
Battery Compartment	in.						mm.					
Standard	31.75 x 13.31 x open						806 x 338 x open					
*Option	31.75 x 8.13 x open						806 x 207 x open					

*Subtract 5.2 inches when using 8.13 battery compartment.

© Copyright Tusk Lift Trucks 2005. All rights reserved. Tusk, Tusk Lift Trucks, the Tusk mark, and UltraVizion are registered trademarks of Tusk Lift Trucks and its affiliates. Tusk products and specifications are subject to continuous improvement and change without prior notice. The illustrations do not necessarily show the standard version and features of the equipment. The actual operating conditions, including equipment configuration, may affect visibility, performance and/or specifications and may suggest the use of certain options, attachments or special operating procedures. Please consult your authorized Tusk Dealer for specifications and availability. Only those products made in the Covington, GA plant are built under ISO 9001 guidelines. Printed in the USA.



14481 Lochridge Blvd., Covington, GA 30014
Tel: 1-800-980-TUSK (1-800-980-8875)
Fax: 770-784-0700
www.tusklifttrucks.com